

*IF THAT GLASS BREAKS
HUMANITY IS DOOMED*

SALOMÉ CHATRIOT

APRIL 18 - MAY 15, 2024

VOLERY GALLERY

Dubai International Financial Centre, United Arab Emirates

 @volerygallery

 www.volerygallery.com

 info@volerygallery.com

VOLERY GALLERY

Dubai International
Financial Centre,
United Arab Emirates



ABOUT THE EXHIBITION

In the heart of Dubai, a city known for its towering skyscrapers and pulsating fusion of tradition and futuristic vision, Salomé Chatriot presents her inaugural solo exhibition in the Middle East, *"If That Glass Breaks Humanity Is Doomed,"* at Volery Gallery. Here, Chatriot doesn't simply exhibit; she unfolds a narrative that dances on the delicate line between the organic and the technologically sublime. In a world where the binary of nature versus machine often dominates discourse, Chatriot's work whispers of a symbiosis so intimate, so intertwined, that it challenges the very foundations of this dichotomy.

With the revelation of 10 new paintings, Chatriot invites us into a realm where her artistic conjurations serve not merely as objects of visual fascination but as portals to a world teetering on the brink of ethereal balance. These pieces, crafted with a finesse that speaks to both the fragility and resilience of existence, are imbued with the essence of Dubai's architectural marvels and the whispering sands that surround it. Each stroke, each layer of vibrant color, is a testament to the city's spirit of innovation—a beacon of modernity that echoes the artist's exploration of harmony between the digital and the corporeal.

Chatriot's "Fragile Ecosystem" performances and installations, integral components of the exhibition, transcend the traditional boundaries of art, merging the breath of life with the pulse of technology. Through the lens of her visionary practice, the exhibition mirrors the paradoxical nature of Dubai itself—a metropolis carved out of the desert, embodying the coexistence of contrasting realms.

The exhibition, while reveling in the aesthetic, plunges deeper, probing the narratives that unfold when humanity and its creations reach a nexus not of conflict but of coalescence. It is a dialogue between the sands of time and the relentless march of progress, between the human touch and the cold precision of the digital. *"If That Glass Breaks Humanity Is Doomed"* is not just a display of artistic endeavor; it is a reflection on the delicate equilibrium that sustains us, set against the backdrop of a city that stands as a monument to the extraordinary feats of which humanity is capable.

In this space, Chatriot doesn't merely show us what is or what could be; she crafts a space where the fragile assemblages of our existence—like dense blocks of color on the brink of collapse—find a momentary anchor. In Dubai, a city that itself is a testament to mankind's reach towards the skies, her exhibition becomes a metaphor for the precarious yet beautiful balance on which our future hinges. Through her art, Salomé Chatriot offers a sobering yet hopeful commentary on the interconnectedness of our world, inviting us to ponder, appreciate, and perhaps find solace in the fragile ecosystem we all inhabit.

ABOUT SALOMÉ CHATRIOT

Salomé Chatriot is an avant-garde artist who masterfully blends technology with the organic, crafting spaces where electronic sculptures and digital art coexist harmoniously. Born in Paris, France, in 1995, Chatriot has established herself in both Lausanne, Switzerland, and her hometown, building a bridge between physical and virtual realms. Her unique approach activates mechanical processes through the natural rhythms of the body, such as breathing and heartbeat, fostering a symbiotic relationship between the human form and technological innovation.

Chatriot's artistic pursuit is not just a mere acceptance of technology but a passionate exploration of its potential to deepen our intimate connections with it. Her work delves into themes of identity, gender, and sexuality, featuring a strong erotic element that challenges prevailing narratives.

With a rich portfolio that extends to dynamic performances and collaborative projects, Chatriot continues to push the boundaries of art and technology. Her contributions to the art world have not gone unnoticed, with accolades such as the Siemens Ingenious Prize and the Opline Prize highlighting her innovative spirit and technical prowess.

As she navigates the evolving landscapes of art and technology, Salomé Chatriot remains a beacon for those seeking to understand and embrace the complex interplay between our digital and physical existences.



Salomé Chatriot, *Honey Time 3*, 2024. Enamel paint on aluminum, 180 x 30 cm



ABOUT THE GALLERY

Founded in 2020 by **Rom Levy**, Volery Gallery promotes artists whose art is best described as the New Contemporary Wave. Established in Dubai, the hub of business in the Middle East and Africa, the gallery features the most prominent international artists. Following the migration patterns, they will fly out from all over the world on a murmuration to the golden aviary, where the gallery offers them an elite location in the heart of the city to share their vision.

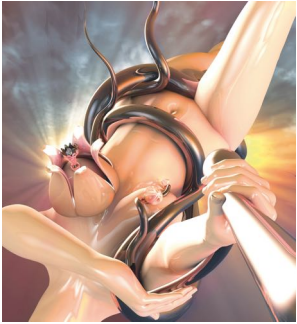
Through collaborations with various galleries and curators Volery runs exhibitions over the year which aim to offer the Middle East the exposure to the latest happenings in the international contemporary art world. Located in Dubai International Financial Center the gallery is accessible through appointments only.



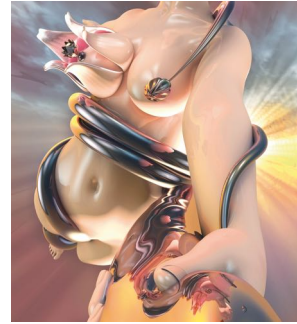
Salomé Chatriot
IDOL (Rising)
2024
Enamel paint on aluminium
180 x 165 cm



Salomé Chatriot
IDOL (Mother)
2024
Enamel paint on aluminium
180 x 165 cm



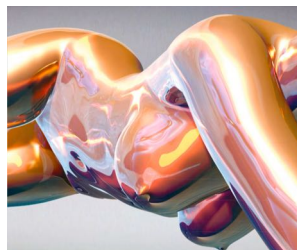
Salomé Chatriot
IDOL (Hydra 5)
2024
Enamel paint on aluminium
180 x 165 cm



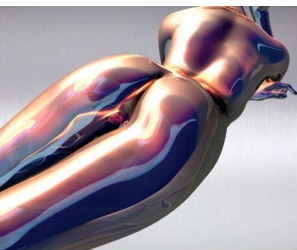
Salomé Chatriot
IDOL (Hydra 6)
2024
Enamel paint on aluminium
180 x 165 cm



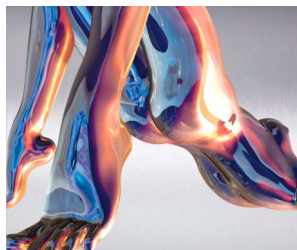
Salomé Chatriot
Incandescent Underwater 1
2024
Enamel paint on aluminium
100 x 130 cm



Salomé Chatriot
Incandescent Underwater 2
2024
Enamel paint on aluminium
100 x 130 cm



Salomé Chatriot
Posing and Breath Hold
2024
Enamel paint on aluminium
100 x 130 cm



Salomé Chatriot
Summer Breath In the Mountain
2024
Enamel paint on aluminium
100 x 130 cm



Salomé Chatriot
Waistgate (Soft Exhale)
2024
Enamel paint on aluminium
130 x 80 cm



Salomé Chatriot
Honey Time 3
2024
Enamel paint on aluminium
180 x 130 cm